



M/s. Steel Line (India)  
ISO 9001 : 2008 CERTIFIED COMPANY



SHAH GROUP<sup>®</sup>  
Importers, Exporters and Suppliers of Stainless Steel

Complete Solutions In Steel



FROM BILLETS TO BARS WE STEEL THE SHOW...

The image features a large, curved stack of stainless steel sheets in the foreground. Below this stack, a film strip is shown, containing various images of steel products: billets, bars, pipes, and coils. The text 'FROM BILLETS TO BARS WE STEEL THE SHOW...' is printed on the bottom edge of the film strip.



## Our Quality Policy

We believe in offering an optimum solution in Stainless Steel that professionally lives upto customer's expectations. A strict Quality Control and Prompt Service ensures a word of appreciation for all efforts taken.

Our philosophy has always been to adopt best practices to achieve "The Best Quality & Service in Steel".

Mill test reports are provided for all material stating the chemical and physical properties as well as compliance with applicable standards.

### QUALITY

We believe quality is essentially the base to forge a healthy & long-term relationship with the customer.

**"QUALITY MEANS SUCCESS"**

We assure quality by regularly visiting and auditing our mills to assure that our products conform to applicable specifications.

### TEAM WORK

Shah Group' is a family business. We believe in providing opportunities to our team members and getting best out of them to achieve optimum results. There's always an

**"EMOTIONAL TOUCH TO OUR WORK"**

### SUCCESS

To create avenues for our team by giving them opportunities to achieve success together with the customers.

**"SUCCESS FOR EVERYONE"**



The **SHAH GROUP**, a well known Steel trading group, established over two decades ago consists of group of companies excelling in manufacturing and trading of stainless steel raw materials. We have a team of young and multi-talented people who endeavour hard for any challenges offered by clients to help them complete their projects. We are well equipped with technical know-how and expertise to cater to the growing demand globally.

Being importer, exporter, dealer & stockist with **Best Quality** in huge stocks, the Group has become one of the most popular and reliable source to the clients for every requirement in Steel. Over the years, we have received recognition from the best of Govt., Semi Govt., Private and MNCs for quality supplies.

The **SHAH GROUP** has developed good relationship with leading Stainless Steel manufacturers across the globe. This has helped clients procure high quality & testified materials / product strictly adhering to their specific need and at a competitive price as well.

We make arrangements for materials against 'CT3 / ARE 4 / H' Form to our clients who are into exports. We also provide Cenvat Invoices to avail of Modvat (excise) benefits.

As a procedure, we provide original Test Certificates from the Manufactures and can also arrange for the most essential Chemical/Physical/Mechanical/Ultrasonic/Micro/IGC or any other test as may be required from the best Govt. approved Laboratories. A third party inspection of our products is also acceptable to us.

While one of the Group Company is an **ISO 9001:2008** Certified Company, the rest are in the process of getting their individual ISO Certification. It would be our privilege to have the affiliated companies of the Group registered as one of the vendors on your approved list of supplies. We promise to provide you with only quality solutions for your every need in Steel.

**SHAH GROUP** uncompromising commitment to quality, integrity and reliability has earned it an enviable reputation as INDIA's leading provider of stainless steel solutions. Complete sourcing connects our customers to the best stainless steel suppliers worldwide.

We hold the spirit of SHAH group which stands for **SUCCESS WITH HARD WORK & HONESTY** as our corporate culture. We can meet most ASME, AISI, ASTM, AMS, and defence specifications, and can cross-reference to most international standards, including DIN 3.1b certification.

**STEEL LINE** has been a leading metal supplier for pumps, valves, global aerospace, automobiles, oil and gas, power generation, petrochemical, bio-medical, pharmaceutical, marine and other high tech manufacturing companies.

With a comprehensive range of high-quality products and services, **SHAH GROUP** engages all sectors of the economy, across infrastructure, commercial and residential construction, engineering, energy, manufacturing and the rural sector - we cater for all steel requirements.

Our company's extensive experience guarantees the satisfaction of our

A low carbon steel which contains chromium at 10% or more by weight is essentially Stainless Steel. Steel gets its unique stainless corrosion resisting properties by additional of chromium. By increased chromium content & addition of other element such as molybdenum, nickel & nitrogen its corrosion resistance & other useful properties are enhanced. It is Stainless but it is not stain proof.

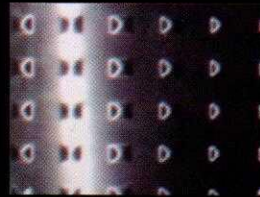
## Stainless Steel

### Chemical Composition of Stainless Steel

Grade AISI	Chemical Composition - Per cent								
	C Max	Mn Max	P Max	S Max	Si Max	Cr	Ni	Mo	Other Element
<b>AUSTENITIC</b>									
201	0.15	5.5/7.5	0.06	0.03	1	16.0/18.0	0.3/0.5	-	-
204	0.15	6.5/9	0.10	0.030	1.0	14.0/17.5	1.5/3.5	-	-
204Cu	0.15	6.5/9	0.10	0.030	1.0	14.0/17.5	1.5/3.5	-	Cu-1.80-4.00
202	0.15	7.5/10	0.06	0.03	1	17.0/19.0	4.0/6.0	-	-
301	0.15	2.0max	0.045	0.040	1.0	16.0/18.0	6.0/8.0	-	-
302	0.15	2.0	0.045	0.030	1.0	17.0/19.0	8.0/10.0	-	E-4-3-4%
302HQ	0.03	2.0	0.045	0.03	1	17.0/19.0	9.0/10.0	-	CU:3-4.0
303	0.15	2.0	0.045	0.15min	1.0	17.0/19.0	8.0/10.0	-	E-4-1% max
303EHS	0.15	2.0	0.02	0.3-0.33	1	17.0/19.0	8.0/10.0	-	CU:1%Max
304	0.08	2.0	0.045	0.030	1.0	18.0/20.0	8.0/10.0	-	-
304L	0.030	2.0	0.045	0.030	1.0	18.0/20.0	8.0/12.0	-	-
304H.C	0.05	2.0	0.045	0.03	1	18.0/20.0	8.5/9.5	-	CU:2-2.50
308	0.08	2.0	0.040	0.030	1.0	18.0/21.0	10.0/12.0	-	-
308LER	0.02	1.5/2.0	0.025	0.02	0.5	19.0/21.0	9.5/11.0	-	-
309	0.20	2.0max	0.045	0.030	1.0	22.0/24.0	12.0/15.0	-	-
309LER	0.03	1.5/2.5	0.02	0.015	0.5	23.0/25.0	12.0/14.0	-	-
309S	0.08	2.0	0.045	0.030	1.0	22.0/24.0	12.0/15.0	-	-
310	0.25	2.0	0.045	0.030	1.50	24.0/26.0	19.0/22.0	-	-
310S	0.08	2.0	0.045	0.030	1.50	24.0/26.0	19.0/22.0	-	-
314	0.25	2.0	0.040	0.030	1.5to3	25.0/26.0	19.0/22.0	-	-
316	0.08	2.0	0.045	0.030	1.0	16.0/18.0	10.0/14.0	2.0/3.0	-
316L	0.030	2.0	0.045	0.030	1.0	16.0/18.0	10.0/14.0	2.0/3.0	-
316LER	0.02	1.5/2.0	0.02	0.02	0.5	18.0/20.0	12.0/14.0	2.0/2.75	-
316TI	0.080	2.0	0.045	0.030	1.0	16.0/18.0	10.0/14.0	2.0/3.0	Ti5xCmin
317	0.08	2.0	0.045	0.030	1.0	18.0/20.0	11.0/15.0	3.0/4.0	-
317L	0.030	2.0	0.045	0.030	1.0	18.0/20.0	11.0/15.0	3.0/4.0	N:0.10/0.22
317 LN	0.03	2.0	0.045	0.03	1	18.0/20.0	11.0/15.0	3.0/4.0	N:0.10/0.22
321	0.08	2.0	0.045	0.030	1.0	17.0/19.0	9.0/12.0	-	Ti5xCmin
347	0.08	2.0	0.045	0.030	1.0	17.0/19.0	9.0/12.0	-	Nb/Ta10xCmin
904 L	0.02	2.0	0.045	0.035	1	19.0/23.0	23.0/28.0	4.0-5.0	CU:1-2
<b>FERRITIC</b>									
409	0.08	1.0	1.00	0.045	0.030	10.5-11.75	0.50	-	Ti6x7C0.75
410	0.15	1.00	0.04	0.03	1.0	11.50/13.5	0.60	-	-
416	0.15	1.25	0.06	0.15min	1.0	12.0/14.0	1.25/2.50	-	-
420	0.15min	1.0	0.04	0.03	1.0	12.0/14.0	0.60	-	-
430	0.12	1.0	0.04	0.03	1.0	16.0/18.0	0.60	-	-

### Features of Stainless Steel

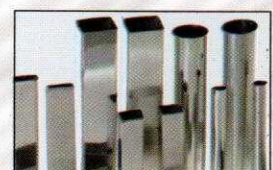
- Corrosion Resistance
- Aesthetic Appearance
- 100% Recyclable
- Heat and Fire Resistance
- Strength to Weight Advantage
- Resistance to impact
- Hygiene
- Long Lasting



## Stainless Steel

### Chemical Composition of Stainless Steel

Grade	Chemical Composition - Per cent								
	C Max	Mn Max	P Max	S Max	Si Max	Cr	Ni	Mo	Other Element
<b>FERRITIC</b>									
431	0.2	1.0	0.04	0.03	1.00	15.0/17.0	1.25/2.5	-	-
440A	0.65 - 0.75	1.00	0.040	0.030	1.00	16 - 18%	-	0.75	-
440B	0.75 - 0.95	1.00	0.040	0.030	1.00	16 - 18%	-	0.75	-
440C	0.95 - 1.20	1.00	0.040	0.030	1.00	16 - 18%	-	0.75	-
446	0.20	1.50	0.040	0.030	1.00	23 - 21%	-	-	-
17.4-PH	0.07	1.0	0.04	0.03	1.00	15.0/17.0	3.0/5.0	-	NB:0.15/0.45
<b>DUPLEX</b>									
1905	0.03	1.2/1.8	0.04	0.03	1.20/2.0	18.0/19.0	4.3/5.2	2.5/3	N:0.5/0.10
2205 / F60	0.03	2	0.03	0.02	1.00	21.0/23.0	4.5/6.5	2.5/3.5	N:0.8/0.20
2506	0.08	1.0	0.04	0.03	0.75	26.0/28.0	4/5	1.3/2	-
<b>SUPER DUPLEX</b>									
2507	0.03	1.20	0.035	0.020	0.80	24.0/26.0	6/8	3/5	N:0.24-0.32



### Chemical Composition of Nickel Alloys Chemical Analysis

Grades Name	Ni min	Co max	Cr	Mo	W	Fe max	Si max	Mn max	C max	Cu max	Al max	Ti max	S max	P max
Nickel 200	99.0	-	-	-	-	0.4	0.35	0.35	0.01	0.25	-	-	0.01	-
Nickel 201	99.0	-	-	-	-	0.4	0.35	0.35	0.02	0.25	-	-	0.01	-
Monel 400	63.0	-	-	-	-	2.5	0.5	2.0	0.30	28-34	-	-	0.024	-
Monel K500	63.0	-	-	-	-	2.0	0.5	1.5	0.25	27-33	2.3-3.2	0.4-0.9	0.01	-
Inconel 600	72.0	-	14-17	-	-	6-10	0.5	1.0	0.15	0.5	-	-	0.015	-
Inconel 601	58-63	-	21-25	-	-	Rest	0.5	1.0	0.10	1.0	1.0-1.7	-	0.015	-
Inconel 625 <sup>1</sup>	58.0	1.0	20-23	8-10	-	5.0	0.5	0.5	0.10	-	0.4	0.4	0.015	0.015
Incolloy 800	30-35	-	19-23.5	-	-	Rest	1.0	1.5	0.10	0.75	0.15-0.6	0.15-0.6	0.015	-
Incolloy 800H	30-35	-	19-23.5	-	-	Rest	1.0	1.5	0.05-0.1	0.75	0.15-0.6	0.15-0.6	0.015	-
Incolloy 825	38-46	-	19-23.5	2.5-3.5	-	Rest	0.5	1.0	0.05	1.5-3	0.2	0.5-1.2	0.03	-
Hastalloy B-2	Rest	1.0	1.0	26-30	-	2.0	0.10	1.0	0.02	-	-	-	0.03	0.04
Hastolloy C276 <sup>2</sup>	Rest	2.5	14-16.5	15-17	3-4.5	4-7	0.08	1.0	0.01	-	-	-	0.03	0.04
Hastolloy C-4	Rest	2.0	14-18	14-17	-	3.0	0.08	1.0	0.015	-	-	0.7	0.03	0.04
Hastolloy G3 <sup>3</sup>	Rest	5.0	21-23.5	6-8	1.5	18-21	1.0	1.0	0.015	1.5-2.5	-	-	0.03	-
Incolloy DS	34.5-41	17-19	-	-	-	Rest	1.9-2.6	0.8-1.5	0.1	0.5	-	0.2	0.03	-
Alloy 20 <sup>4</sup>	32-38	-	19-21	2-3	-	Rest	1.0	2.0	0.07	2.4	-	-	0.025	0.045



The Shah Group, has become one stop shop for all types of stainless steel long products requirement. We can proudly & safely say that most our customers believe we are the best source for all kinds of long products. We provide rolled, solution annealed, hardened tampered, cold drawn, centreless ground, peeled & polished bars in all stainless steel grades (Austenitic, Ferritic & Duplex Steel). Our Hexagonal, squares, cold drawn flats, D-section I-beams are like feathers in the crown.



## Long Products

### Product Range

Items	Condition	Size Range
Rounds	As Rolled/Soln. Annealed	5 mm to 300 mm
Bright Bars	Cold Drawn/Peeled	3 mm to 150 mm
Hexagons / Squares	Cold Drawn/Soln. Annealed	4 mm to 60 mm
Cold Heading Wires (CHQ)	Cold Drawn/Soln. Annealed & Picked	5 mm to 22 mm
Wires Rods	As Rolled / Soln. Annealed	5.5 mm to 30 mm
Blooms / Billets	Concast	100 mm to 250 mm
RCS	As Rolled	50 mm to 140 mm
Wires	Cold Drawn/Soln. Annealed	0.5 mm to 5 mm



We supply both end chamfered bright bars with surface finish Ra-0.20 m / 12 RMS max. & length from 2 mtr to 8 mtr.

### Tolerance Chart for SS Round Bars as per ISO



Size Range (mm)	h8	h9	h10	h11	h12	h13	K12/K13
Upto 6	-0.018	-0.030	-0.048	-0.075	-0.120	-0.180	-
Over 6 upto 10	-0.022	-0.036	-0.058	-0.090	-0.150	-0.220	-
Over 10 upto 18	-0.027	-0.043	-0.070	-0.110	-0.180	-0.270	-
Over 18 upto 30	-0.033	-0.052	-0.084	-0.130	-0.210	-0.330	+ 0.10 / + 0.15
Over 30 upto 50	-0.039	-0.062	-0.100	-0.160	-0.250	-0.390	+ 0.15 / + 0.20
Over 50 upto 80	-0.046	-0.074	-0.120	-0.190	-0.300	-0.460	+ 0.20 / + 0.25
Over 80 upto 120	-0.054	-0.087	-0.140	-0.220	-0.350	-0.540	+ 0.25 / + 0.30

### Hardness Conversions Chart

Brinell Hardness HB	Vickers Hardness HV	Rockwell Hardness HRC	Rockwell Hardness HRB	Tensile Strength KSI	Brinell Hardness HB	Vickers Hardness HV	Rockwell Hardness HRC	Rockwell Hardness HRB	Tensile Strength KSI
321	339	34	108	158	174	182	-	88	84
311	328	33	108	154	170	178	-	87	82
302	319	32	107	150	166	175	-	86	80
293	309	31	106	146	163	171	-	85	78
285	301	30	105	142	159	167	-	84	77
277	292	29	104	138	156	163	-	83	76
269	284	28	104	135	153	160	-	82	75
262	276	27	103	131	149	156	-	81	74
255	269	25	102	125	146	153	-	80	72
248	261	24	101	121	143	150	-	79	71
241	253	23	100	119	140	147	-	78	70
235	247	22	99	117	137	143	-	76	67
229	241	21	98	113	134	140	-	75	66
223	234	-	97	110	131	137	-	74	65
217	228	-	96	107	128	134	-	73	64
212	222	-	95	102	126	132	-	72	63
207	218	-	95	100	124	129	-	71	62
202	212	-	94	98	121	127	-	70	60
197	207	-	93	96	118	124	-	69	59
192	202	-	92	94	116	122	-	68	58
187	196	-	91	90	114	119	-	67	57

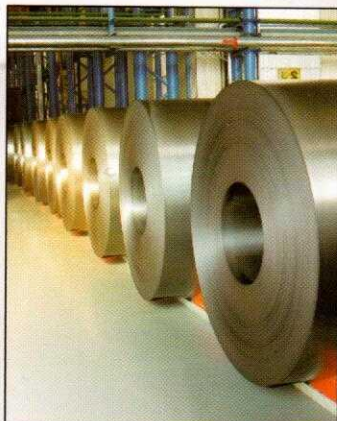
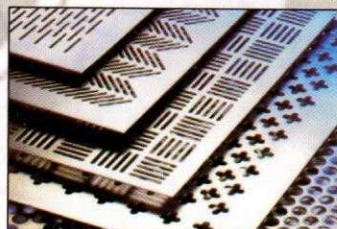
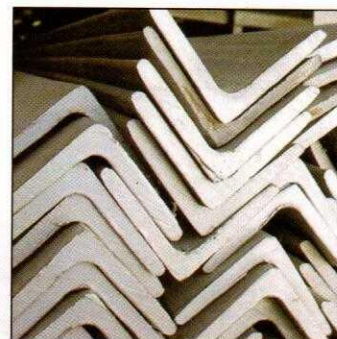
The Shah Group, one of the leading importer & stockist of flat products, based on the unprecedented commitments to excellence, has become a major source for flat products viz. sheets, coils, plates, strips, shims (foils), slit coils etc. It has a wide and huge range of stock & infrastructure to cater to all the growing demand of their customers. We also supply flat bars, circles, angles, channels as per the clients requirement strictly keeping in mind their quality norms.



## Flat Products

### Stock Range

Items	Range
S. S. Sheets	0.5 mm TO 4 mm (thick)
S. S. Coils	0.2 mm TO 20 mm (thick)
S. S. Plates	5 mm TO 50 mm (thick)
S. S. Foils	0.1 mm TO 0.3 mm (thick)
S. S. Flats	20 mm TO 100 mm (width) 5 mm TO 25 mm (thick)
S. S. Angles	20 mm TO 100 mm (width) 3 mm TO 10 mm (thick)
S. S. Circles	0.5 mm TO 50 mm (thick) (Any Diameter)
S. S. Designer Sheets	1 mm TO 4 mm (thick)



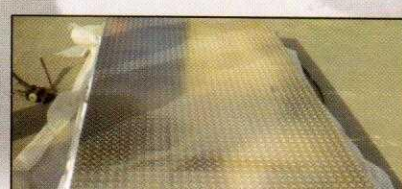
### Stainless Steel in various finish

Steel is first rolled to size and thickness and then annealed to change the properties of the final material. Any oxidation that forms a surface (scale) is removed by pickling, and a passivation layer is created on the surface.

A Final Finish Can then be applied to achieve the desired aesthetic appearance...

- No. 0 : Hot Rolled, Annealed, Thicker Plates
- No. 1 : Hot Rolled, Annealed and Passivated
- No. 2 D : Cold Rolled, Annealed, Pickled and Passivated
- No. 2 B : Cold Rolled, Annealed, Pickled and Passivated with Additional
- No. 2 BA : Bright Annealed (BA or 2R)  
Bright Annealed under Oxygen-free Atmospheric condition
- No. 3 : Coarse Abrasive finish Applied Mechanically
- No. 4 : Brushed finish
- No. 5 : Satin finish
- No. 6 : Matte finish
- No. 7 : Reflective finish
- No. 8 : Mirror finish
- No. 9 : Bead Blast finish
- No. 10 : Heat colored finish wide range of electro polished sheets colored surface

We also deal in HR & CR Sheets / Coil in Carbon Steel & Mild Steel



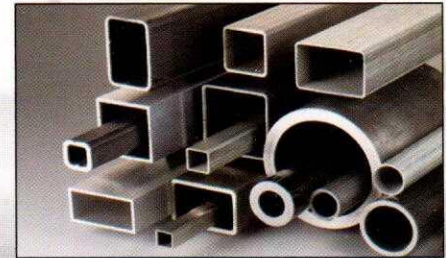
The Shah Group, a leading stockist and importer of ERW/Seamless pipes & tubes in stainless steel, alloy steel, carbon steel. We supply pipes in various sizes, shapes viz round, oval, rectangle, quadrangular etc. & finish viz. polished, satin, hairline, aluminium, etc strictly adhering to our customer's quality constraints.



## Pipes & Tubes

### Product Range

Items	Range (OD)	NB	Finish
SS ERW Pipes	1/8"-24"	1/8"-24"	HR, Mirror, Matt
SS Seamless Pipes	1/8"-24"	1/8"-24"	HR
SS Rectangle Pipes	1/2"-4"	1/2"-4"	HR, Mirror, Matt
SS Square Pipes	1/2"-4"	1/2"-4"	HR, Mirror, Matt
SS Oval Pipes	1/2"-4"	1/2"-4"	HR, Mirror, Matt



### Pipes & Tubes

Size of Pipes & Tubes		Thickness of Stainless Steel Pipes										Double X strong
		sch 5	sch 10	sch 20	sch 40	sch 60	sch 80	sch 100	sch120	sch140	sch160	
Nominal in inch	Outside in mm	mm	mm	mm	mm	mm	mm	mm	mm	mm	mm	mm
1/8	10.3	1	1.24	1.6	1.73	-	2.41	-	-	-	-	-
1/4	13.7	1.2	1.65	2	2.24	-	3.02	-	-	-	-	-
3/8	17.1	1.2	1.65	2	2.31	-	3.2	-	-	-	-	-
1/2	21.3	1.65	2.11	2.5	2.77	-	3.73	-	-	-	4.78	7.47
3/4	26.7	1.65	2.11	2.5	2.87	-	3.91	-	-	-	5.54	7.82
1	33.4	1.65	2.77	3	3.38	-	4.55	-	-	-	6.35	9.09
1.1/4	42.2	1.65	2.77	3	3.56	-	4.85	-	-	-	6.35	9.7
1.1/2	48.3	1.65	2.77	3	3.68	-	5.08	-	-	-	7.14	10.16
2	60.3	1.65	2.77	3	3.91	-	5.54	-	-	-	8.71	11.07
2.1/2	73	2.11	3.05	4	5.16	-	7.01	-	-	-	9.52	14.02
3	88.9	2.11	3.05	4	5.49	-	7.62	-	-	-	11.1	15.24
3.1/2	101.6	2.11	3.05	4.5	5.74	-	8.08	-	-	-	-	16.15
4	114.3	2.11	3.05	4.5	6.02	-	8.56	-	11.13	-	13.5	17.12
5	141.3	2.77	3.4	5	6.55	-	9.52	-	12.7	-	15.9	19.06
6	168.3	2.77	3.4	6.35	7.11	-	10.97	-	14.27	-	18.2	21.95
8	219.1	2.77	3.76	6.35	8.18	10.34	12.7	15.06	18.24	20.62	23	22.22
10	273	3.4	4.19	6.35	9.27	12.70	15.09	18.24	21.42	25.4	28.6	25.4
12	324	3.96	4.57	6.35	10.31	14.27	17.48	21.41	25.40	28.57	33.3	25.4
14	355.6	3.96	4.76	7.92	11.13	15.06	19.06	23.8	27.76	31.75	35.7	-
16	406.4	4.19	4.76	7.92	12.07	16.66	21.44	26.19	30.94	36.53	40.5	-
18	457.2	4.19	4.76	7.92	14.27	19.05	23.83	29.36	34.92	39.67	45.2	-
20	508	4.76	5.54	9.52	15.09	20.62	26.19	32.54	38.1	44.45	49.9	-



The Shah Group, has added new range of products to its already existing huge stock to cater to their customer's demand of getting everything under one roof "One Stop Shop". Being in the business for more than two decades has assured quality supplies from our buyers to provide world class material to our customers.



## New Products

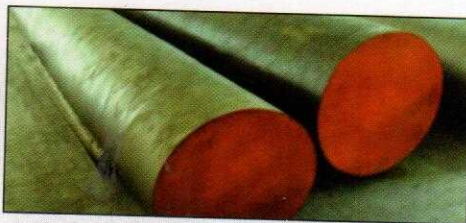
### Carbon Steel / Mild Steel

EN 8, EN 9,



### Hot Worksteel / Non Shrinking Die Steel / Tool Steel

H 11, H 13, HCHCR, M2, M3, D2, D3, OHNS



### Alloy Steel

EN 24, EN 31, EN 36, EN 47, EN 353, EN 1A1, EN 1A NON LEADED, SAE 8620, 20 MNCR5, F9, F11, F22, AISI 4140



### Spring Steel Wire Gr. 1, Gr. 2, Gr. 3



### Fasteners



### Strain Hardened Bars: High quality B8 & B8M, Class I & II, Bright Bars, Hexagonals from 6 mm to 80 mm



### Forgings & Fittings

#### Stainless Steel Forged Flanges

Standard	ANSI	DIN
Grades	304, 304L, 316, 316L, 316Ti, 321	304, 304L, 316, 316L, 316Ti, 321
Size	1/2" TO 8"	DN 10 to DN 200
Type	WNRF, SORF, BLRF, Threaded	Slipon, Weldneck, Blind
Dimension	ANSI B 16.5	DIN2576, DIN2633, DIN2527 etc.
Pressure Rating	150, 300, 600, 900, 1500, 2500 Class	PN10, PN16, PN40, PN64



### Non-Ferrous Metals

One of the group company caters to the growing demand of our customers for non-ferrous metals like Copper, Brass, Aluminum, Zinc, Tin & other alloys in various sizes & shapes. We being in the business for last two decades, have contacts with the best manufacturers & stockist





## Exports

**STEEL LINE INDIA** is a world class renowned exporter of ferrous and non ferrous metals. Since last two decades we have been assiduously surpassing our goals step by step in the Steel industry and fulfilling the needs of various customers allocated in different part of Asia, Africa, Europe, Latin America, Australia and New Zealand,.

Over the years, perseverance and ardor in our work helped us to carve out a path of success for us and our venerated clients. With state-of-the-art manufacturing processes, contemporary technologies, and proficient services, we consider: offering finest quality – best in class products – at the most advantageous rates, as our forte.

At Steel Line India, we offer a balanced product portfolio of **STAINLESS STEEL, DUPLEX STEEL, MILD STEEL, ALLOY STEEL, CARBON STEEL & HIGH NICKEL ALLOYS** of globally recognized ASTM Standards.

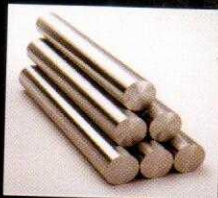
We are certified and accredited with **ISO 9001:2008** for our entire Quality System .

### PRODUCTS :-

- BRIGHT BARS • ROUND BARS • FLAT BARS • HEXAGONAL BARS • SQUARE BARS
- ANGLE BARS (V) • PIPE & TUBES • SHEETS • COILS • PLATES • STRIPS
- FITTINGS • FASTENERS • HIGH NICKEL ALLOYS

### Specifications

USA	France	Germany	Germany	Italy	Japan	Russia	Spain	Sweden	UK	European Union
AISI	AFNOR	DIN 17006	W.N. 17007	UNI	JIS	GOST	UNE	SIS	BSI	EURONORM
304	Z 6 CN 18-09	X 5 CrNi 18 10 X 5 CrNi 18 12	1.4301 1.4303	X 5 CrNi 1810	SUS 304	08KH18 N10 06KH 18N11	X 6 CrNi 19-10	23 32	304S15 304S16	X 6 CrNi 18 10
304 L	Z 2 CN 18-10	X 2 CrNi 18 11	1.4306	X 2 CrNi 1911	SUS 304L	03KH18 N11	X 2 CrNi 19-10	23 52	304S11	X 3 CrNi 18 10
310		X 12 CrNi 25 21	1.4845	X 22 CrNi 2520	SUH 310	10KH23N18			310S24	
316	Z 6 CND 17-11 17 12 2	X 5 CrNiMo	1.4401	X 5 CrNiMo 1712	SUS 316		X 6 CrNiMo 17-12-03	23 47	316S31	X 6 CrNiMo 17 12 2
316 L	Z 2 CND 17-12	X 2 CrNiMo 17 13 2	1.4404	X 2 CrNiMo 1712	SUS 316L	03KH16N 15M3	X 2 CrNiMo 17-12-03	23 48	316S11	X 3 CrNiMo 17 12 2
-317				X 5 CrNiMo 1815	SUS 317			23 66	317S16	
317 L	Z 2 CND 19-15	X 2 CrNiMo 18 16 4	1.4438	X 2 CrNiMo 1815	SUS 317L			23 67	317S12	X 3 CrNiMo 18 16 4
321	Z 6 CNT 18-10	X 6 CrNiTi 18 10 X 12 CrNiTi 18 9	1.4541 1.4878	X 6 CrNiTi 1811	SUS 321	12KH18N 10T	X 6 CrNiTi 18-11	23 37	321S31	X 6 CrNiTi 18 10
410	Z 10 C 13 Z	X 6 Cr 13	1.4000	X 12 Cr 13	SUS 410	08Kh13	X 12 Cr 13	23 02	410S21	X 12 Cr 13



**SHAH GROUP**  
Importers, Exporters and Suppliers of Stainless Steel

## Parth Steel & Engg. Co.

### INTRODUCTION:

Ever since its foray into the steel trade, Parth Steel Engineering has established itself as name to reckon with, in the steel industry. Over the years, through meticulous quality control and outstanding customer care, it has built a reputation for quality, reliability, and integrity.

Our strong contacts with Leading Manufacturers in India and the World is the cornerstone of our success and rapid growth in the industry.

It is our endeavor to carry forward the tradition of excellence providing consistent Superior Quality and Improved Products to our esteemed customers exceeding their expectations.

Our company has moved forward with a relentless commitment to offer finest quality products at the most competitive price to ensure complete customer satisfaction. With years of experience, a team of dedicated personnel and willingness to succeed, the company is determined to meet with the never-ending demands of the customers.

### PRODUCTS:

Grades: - 410, 420, 416, 430, 430 F, 431, 446, 440 A, 440 B, 440 C, 17-4 PH.

PARTH STEEL stocks a full range of stainless round bar from 1/16" round thru 26" in diameter. Nearly all grades of 400 series stainless steel are stocked in round bar, heat treated stainless round bars are stocked in 400 series stainless, and we stock 410HT, 416HT and 17-4PHHT.

### Size:-

- Black Bar – 5.00 MM to 160 MM
- Forged Bar – 150 MM to 350 MM
- Bright Bar – 5.00 MM to 105 MM
- Tolerance: h7, h8, h9, k12, k13.
- Standard: As per EN, DIN, JIS, ASTM, BS, ASME, AISI, etc..
- Length: 1 to 6 meters & as per customer's requirement.

### APPLICATIONS:

We supply these products in a bulk to cater to customers requirements by meeting different International Codes & Standards and also used in industries such as VALVE, PUMP, ENGINEERING, CULTRY, FOOD and various other industries.

### 400 Series Chemical Properties:

Type	C	Mn	P	S	N	Si	Cr	Ni	Mo	Other Element
410*	0.15	1.00	0.040	0.030	-	1.00	11.5 / 13.5	-	-	
410S	0.08	0.30/0.65	0.030	0.010	0.060	0.15/0.50	12.00 / 12.60	0.20/0.55	0.20/0.55	
416	0.15	1.25	0.060	0.15 min	-	1.00	12.00 / 14.00	-	-	
420	0.15 min	1.00	0.040	0.030	-	1.00	12.00 / 14.00	-	-	
430	0.15	1.00	0.040	0.030	-	1.00	16.00 / 18.00	-	-	
431	0.2	1.0	0.040	0.030		1.00	15.00 / 17.00	1.25/2.5	-	
440C	0.95/1.20	1.00	0.040	0.030	-	1.00	16.00 / 18.00	-	0.75	
17.4-PH	0.07	1.00	0.040	0.030		1.00	15.00 / 17.00	3.0/5.0		-NB:0.15/0.45

SERIES :- 410, 420, 416, 430, 430 F, 431, 446, 440A, 440B, 440C, 17-4 PH

### CONTACT : PANKAJ SANGHVI

89/91, PS Ram Mandir Marg, 4th Kumbharwada Lane, Mumbai - 400 004.

M: +(91) 09892990557, T: +(91)-22-6610 9851, 6610 9852, 6749 6052,



## Special Steel & Alloys

### INTRODUCTION:

Special Steel & Alloys was established in the year 2007 at Mumbai. We are a well-organized group prominently engaged in Manufacturing, Supplying, Importing, Exporting and Trading of optimum quality stainless steel raw material. Our products are made in compliance with industrial norms and guidelines using premium-quality raw-material. We offer our products to client within the shortest possible time frame at leading market rates.

We have become one of the most popular and reliable sources for the entire steel requirements of our esteemed clients. We have developed good long term relations with few of the best stainless steel manufacturers all over the world thereby heeling our clients to source high quality standards at the most competitive prices.

Under the leadership of Mr. Vikram Bhansali, we have established long term alliance with our clients. The foundation of our relationship with our client is based on mutual trust. We are always prepared to address any of our clients requirements in a prompt and effortless manner.

### PRODUCTS:

Special Steel & Alloys is one of the leading stockiest of STEEL & ALLOYS of premium quality highly acclaimed amongst our domestic clients and overseas stockholders. Being heavily used in the market, Special Steel & Alloys have made a reputed name in the market of metal dealings.

Our product list extends from duplex steel, super duplex steel to high nickel alloys in all kinds of shapes and sizes such as Bars, Pipes, Tubes, Sheets, Flats, Plates, Coil, etc.

### GRADES:

#### High Nickel Alloys

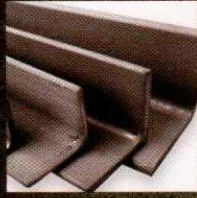
Hastealloys	C-22 /C-276
Nickel	200
Monal	400
Inconel	600
Inconel	625
Alloy	020
Titanium	GR.1 / GR.2
SS	904 L

#### Duplex & Super Duplex Round Bars

S 2205
S 31803
S 32750
S 32760

### CONTACT : VIKRAM H. BHANSALI

No. 81/1, Varsha Building, 2nd Khetwadi, Mumbai - 400 004, Maharashtra, India.



**SHAH GROUP**  
Importers, Exporters and Suppliers of Stainless Steel

## Royal Stainless

### INTRODUCTION :

ROYAL STAINLESS was established in the year 2009 to cater to the retail business of SHAH GROUP. Being the National Stockist and Supplier, ROYAL STAINLESS are the experts in stainless steel retailing and fulfilling smaller steel requirements.

Growing tremendously in this domain, we have carved a niche as one of the prominent stainless steel Suppliers based in India. We have established imprints on the minds of clients by serving them with superior quality products. We pride ourselves in our ability to respond quickly and flexibly to our customers' needs and in efficiently managing the risks in Moving Steel around the world. In shortest possible time, it has achieved good recognition in the industry.

### PRODUCTS:

Basically, SHAH GROUP has more than 450 clients and it deals in all major stainless steel products viz. BARS, SHEETS, COILS, PIPES in various shapes and sizes along with High Nickel Alloys and to provide better services & other profiles viz. CIRCLES, FLAT BARS, ANGLE BARS & SLIT COILS in above range, ROYAL STAINLESS was established.

We stock a huge range of Stainless Steel in all grades and sizes which gives that edge to supply on demand and at competitive price. With penchant to render absolute satisfaction to customers, we assure to provide quality products and expedite services. The main features of this product include accurate dimensions, Heat resistant, Corrosion resistant, smooth finish and are very durable. The wide range of Stainless Steel products offered by us is procured from reputed mills in India and imported from various countries of the world. Also it can offer wide range of customize products as per clients specification & drawings.

### APPLICATION:

It is used in petrochemical and fertilizer industries, dairy product processing equipments, food processing, pharmaceuticals industries, hospitals, kitchenware, sinks, cutlery, cryogenic vessels, as heat exchangers in air conditioning, refrigeration, textile machinery, distilleries among others.

### VISON:

Our vision is we do understand that you will be having your respective vendors who will be there for all your needs. All we request you is to give us an opportunity to be a part among your preferred vendors. We have built a business on strong values of partnerships, transparency, ethics and fair play relationships with our customers, dealers, associates, suppliers, employees and testimony to our growth together over decades. Many of your customer relationships have been continuous over a decade and we are proud of the continually increasing value we have been able to bring to our customers businesses.

### CONTACT : PRAVIN SHAH

65/67, Kolsawala Building, 3rd Kumbharwada Lane, Mumbai - 400 004.

M: +(91) 09987605195, 09892395195



Complete Solutions In Steel

#### OUR PRODUCTS

ROUNDS · BRIGHT BARS · WIRE RODS · RCS · BILLETS · FORGED ROUNDS  
SQUARES · ANGLES · HEXAGONS · RECTANGLES · TRIANGLES · BLOOMS  
I-BARS · WEDGE BARS · SHEETS · PLATES · FOILS · DESIGNER SHEETS · FLATS  
PIPES · TUBES · SQUARE PIPE · RECTANGLE PIPES · OVAL PIPES  
COILS · CIRCLES · CHANNELS · PROFILES · PIPE FITTINGS · FORGED FITTINGS

#### APPLICATION INDUSTRIES

PETROCHEMICAL · CHEMICAL · SMELTING · MEDICAL · PAPER · HEAT · PRESERVATION  
OIL PROCESSING · REFRIGERATION · FOOD · POWER · AEROSPACE · HEAT EXCHANGER  
VALVES · REFINERY · PUMP · CONSTRUCTION · ARCHITECTURAL · HARDWARE · FASTENER  
PHARMACEUTICAL · ENGINEERING · SUGAR · AUTOMOBILE · FORGING · TEXTILE  
BREWERY · SYNTHETIC FIBRE · FERTILIZER · UTENSIL · HOME & KITCHEN APPLIANCES



SHAH GROUP<sup>TM</sup>  
Importers, Exporters and Suppliers of Stainless Steel

Complete Solutions In Steel



M/s. Steel Line (India)  
ISO 9001 : 2008 CERTIFIED COMPANY

www.roundbars.co.in  
www.sgroup.co.in

#### STEEL LINE (INDIA)

##### ROUND BARS & FLAT PRODUCTS

22, Bhandari Street, 1st Kumbharwada Lane, Mumbai - 400 004. India.  
T: +91 22 6743 8072, 6749 6007, 4321 8000 to 18 • F: +91 22 4321 8011  
E: jitendra@steelline.co.in, steellineindia@rocketmail.com  
Jitendra Shah : +91) 09821318536 (200 & 300 series Round Bars)  
Narendra Shah : +91) 09892313230 (All Grades Sheet & Coils)  
Rajendra Shah : +91) 09892247217 (300 Series Bright Bars)  
Naresh Jain : +91) 08080291189 (Exports All Products)

#### ROYAL STAINLESS

65/67, Kolsawala Building, 3rd Kumbharwada Lane, Mumbai - 400 004.  
T: +91)-22-6636 2737, 6666 2737 • F: +91)-22-6743 8071  
E: shahpravin36@gmail.com  
Pravin Shah : +91) 09987605195, 09892395195 (Strips, Plates & Circles)

#### PARTH STEEL & ENGG. CO.

89/91, PS Ram Mandir Marg, 4th Kumbharwada Lane, Mumbai - 400 004.  
T: +91)-22-6610 9851, 6610 9852, 6749 6052 • F: +91)-22-6749 6192  
E: parthsteel\_engg@yahoo.co.in  
Pankaj Sanghvi : +91) 09892990557 (400 series Bright & Round Bars, 17-4PH)

#### SPECIAL STEEL & ALLOYS

81/1 Varsha Building, 2nd Khetwadi, Mumbai - 400 004.  
T: +91)-22-6743 6579, 6615 1826 • F: +91)-22-6743 6579  
E: vicky@specialsteelalloys.com